



# **NSSI Science Technical Group Remote Sensing & GIS Subgroup Update**

*October 2006*

*For additional information please contact:*

*Dr. Robert Shuchman, [shuchman@mtu.edu](mailto:shuchman@mtu.edu)*

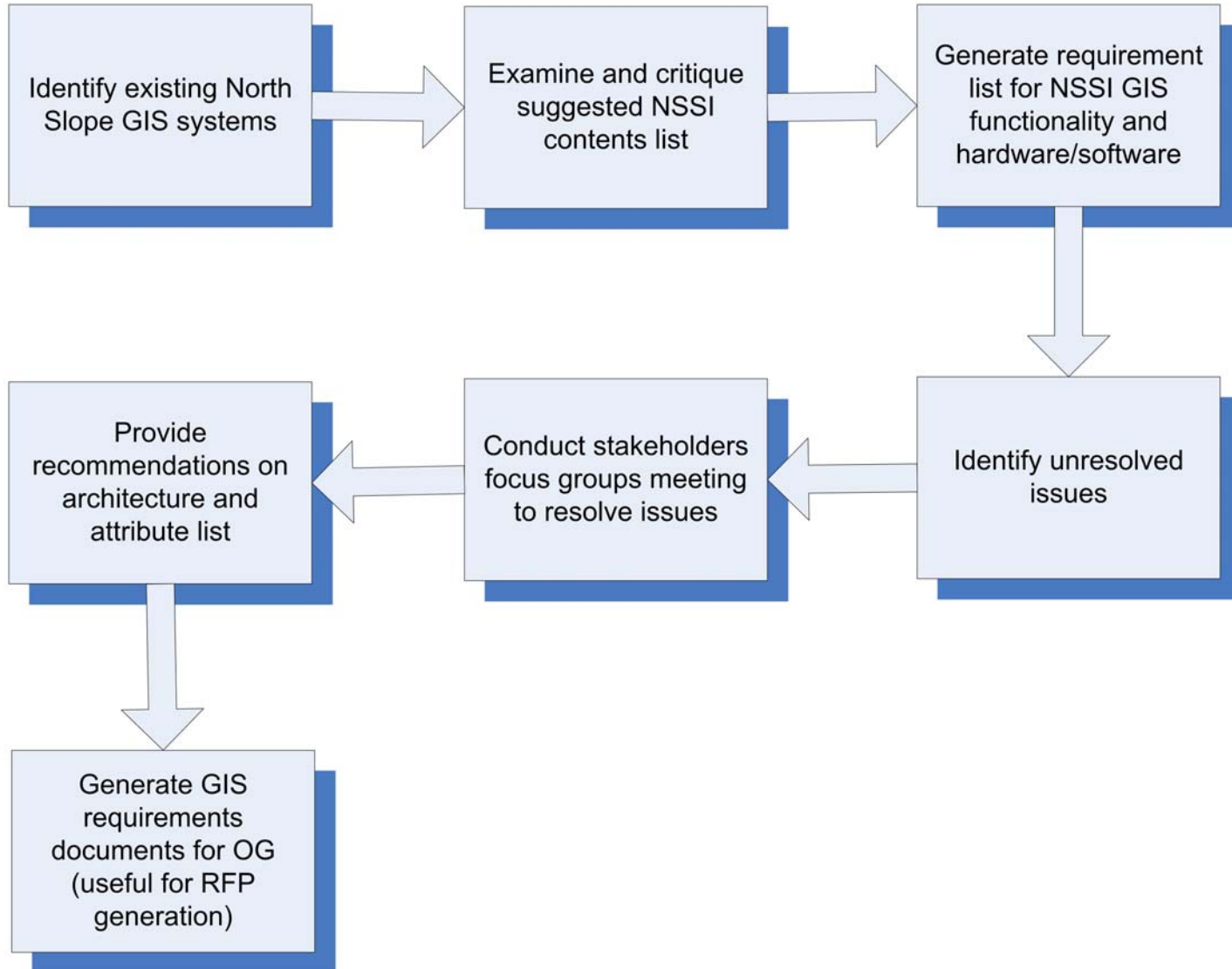
# Remote Sensing & GIS Subgroup Update

- Subgroup members: Bob Shuchman (lead), Doug Kane, John Kelley, Bill Streever, Kim Titus
- Set-up a secure workroom within the NSSI web portal (all STG members can view, only subgroup members can edit)
- Set a schedule
  - **Early September:** Work with Ken and the OG to better define scope and prepare study outline and detailed schedule
  - **September:** Collect information and interview stakeholders
  - **October 11<sup>th</sup>:** Meet as a group
  - **October - November:** Complete additional fact finding
  - **November:** Present progress report to OG
  - **December:** Prepare briefings report

# Remote Sensing &GIS Subgroup Update

- Requested NOAA, NASA, and the U.S. Navy Remote Sensing group to give updates on ocean remote sensing tables (tables available on portal in secure remote sensing subgroup work area)
- The subgroup would like the NSSI OG to better define the scope of the study (this could be accomplished through the Study Request Form)

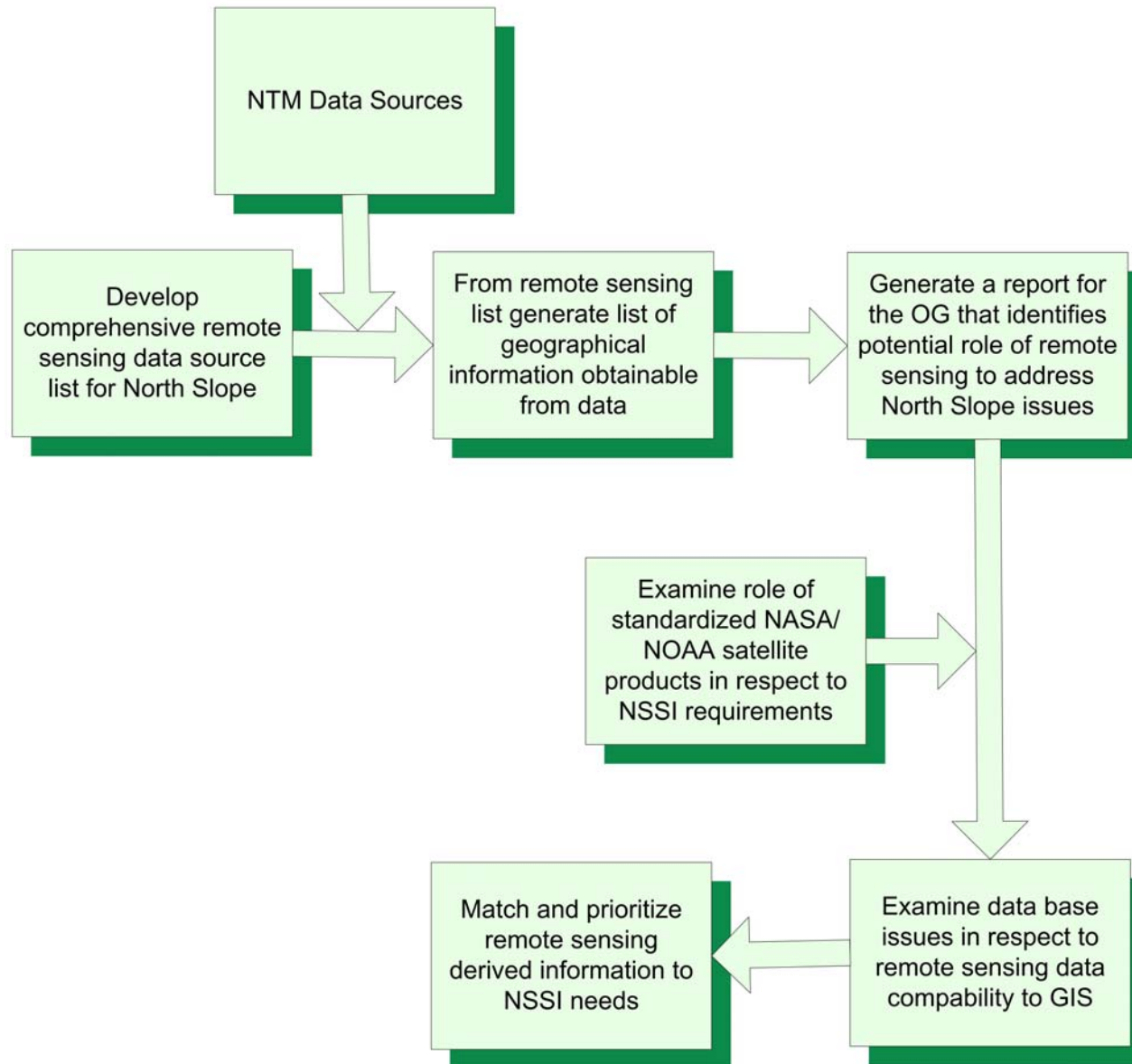
# Suggested NSSI STG GIS Study Steps



# GIS Contents

- Study Elements
- Existing North Slope Geographic Information Systems
- Examination of Preliminary GIS Baseline Data Layers
- Suggested Distributed Data Architecture

# Suggested NSSI STG Remote Sensing Study Steps



# Remote Sensing Contents

- Study elements
- Types of remote sensing
- Previous remote sensing work
- Available remote sensing data
- Land cover, sea ice, and oceanographic information obtainable from remote sensing
- Data needs for effective GIS-based DSS
- Example remote sensing applications
- Recommendations



# NSSI Science Technical Group Study Request Form

*October 2006*

*For additional information please contact:*

*Dr. Robert Shuchman, [shuchman@mtu.edu](mailto:shuchman@mtu.edu)*