



NSSI Science Technical Group Remote Sensing & GIS Subgroup Update

October 2006

For additional information please contact:

Dr. Robert Shuchman, shuchman@mtu.edu

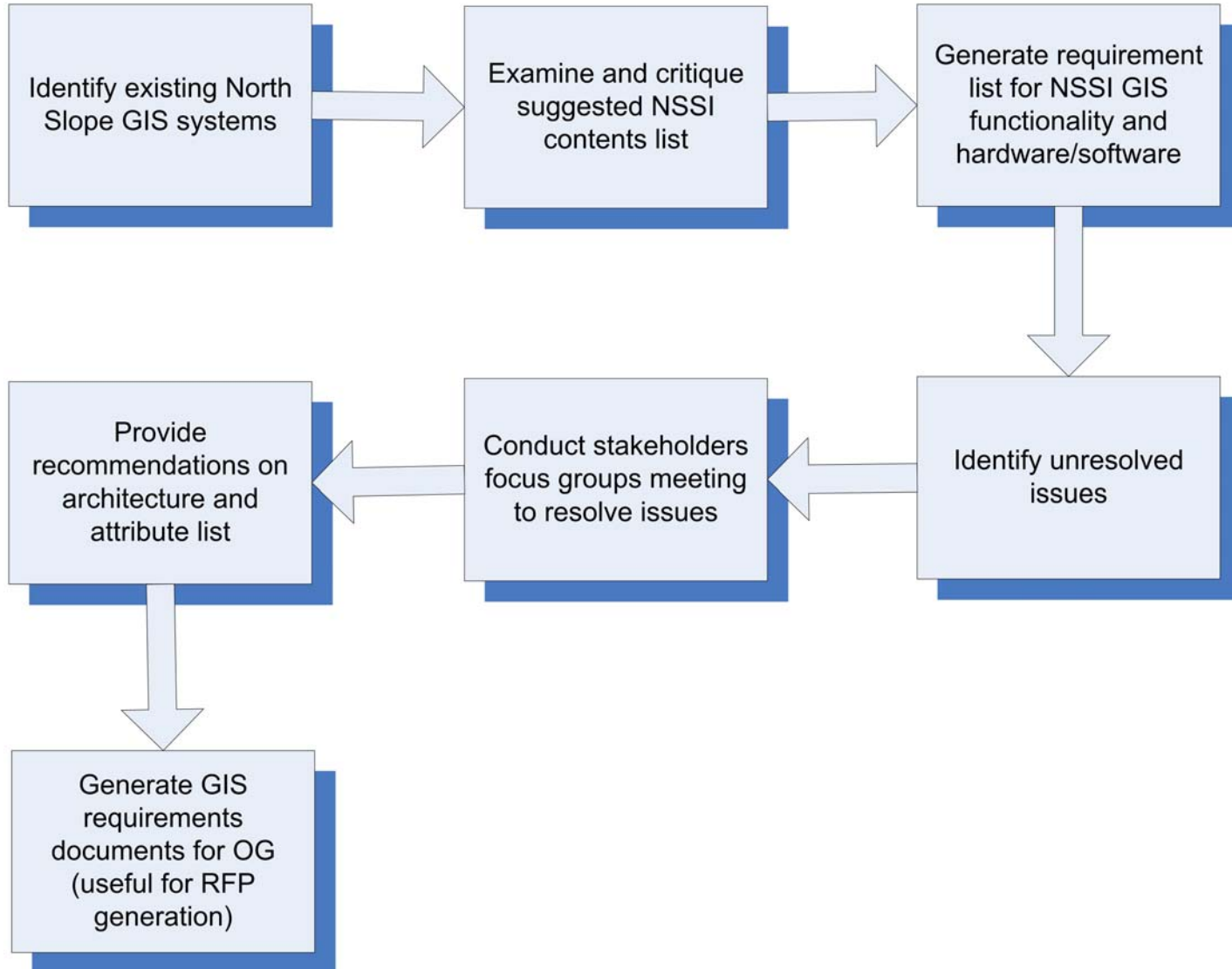
Remote Sensing & GIS Subgroup Update

- Subgroup members: Bob Shuchman (lead), Doug Kane, John Kelley, Bill Streever, Kim Titus
- Set-up a secure workroom within the NSSI web portal (all STG members can view, only subgroup members can edit)
- Set a schedule
 - **Early September:** Work with Ken and the OG to better define scope and prepare study outline and detailed schedule
 - **September:** Collect information and interview stakeholders
 - **October 11th:** Meet as a group
 - **October - November:** Complete additional fact finding
 - **November:** Present progress report to OG
 - **December:** Prepare briefings report

Remote Sensing &GIS Subgroup Update

- Requested NOAA, NASA, and the U.S. Navy Remote Sensing group to give updates on ocean remote sensing tables (tables available on portal in secure remote sensing subgroup work area)
- The subgroup would like the NSSI OG to better define the scope of the study (this could be accomplished through the Study Request Form)

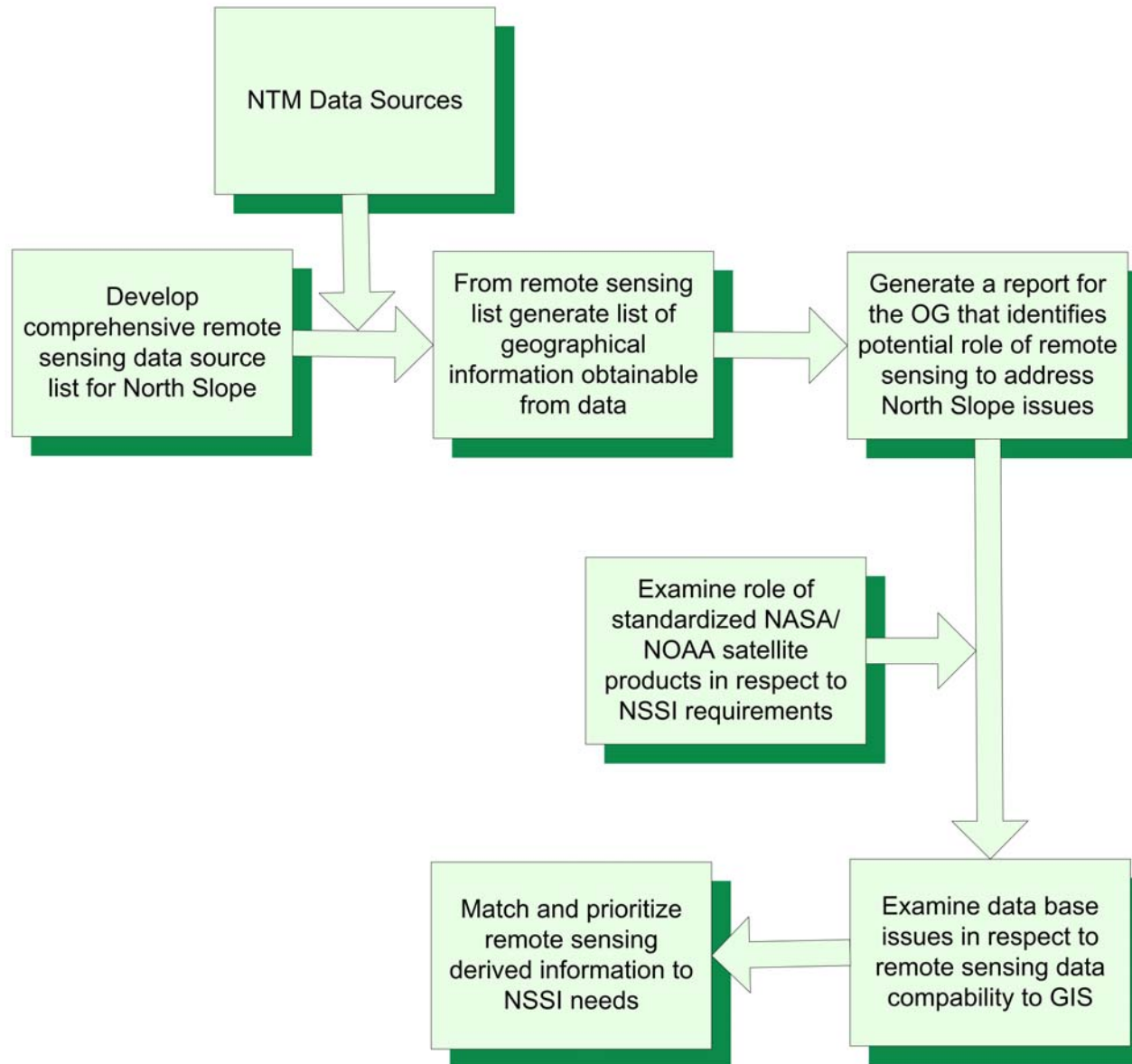
Suggested NSSI STG GIS Study Steps



GIS Contents

- Study Elements
- Existing North Slope Geographic Information Systems
- Examination of Preliminary GIS Baseline Data Layers
- Suggested Distributed Data Architecture

Suggested NSSI STG Remote Sensing Study Steps



Remote Sensing Contents

- Study elements
- Types of remote sensing
- Previous remote sensing work
- Available remote sensing data
- Land cover, sea ice, and oceanographic information obtainable from remote sensing
- Data needs for effective GIS-based DSS
- Example remote sensing applications
- Recommendations



NSSI Science Technical Group Study Request Form

October 2006

For additional information please contact:

Dr. Robert Shuchman, shuchman@mtu.edu